



Lobby comune



Terrazza penthouse



Vista aerea



Appartamento



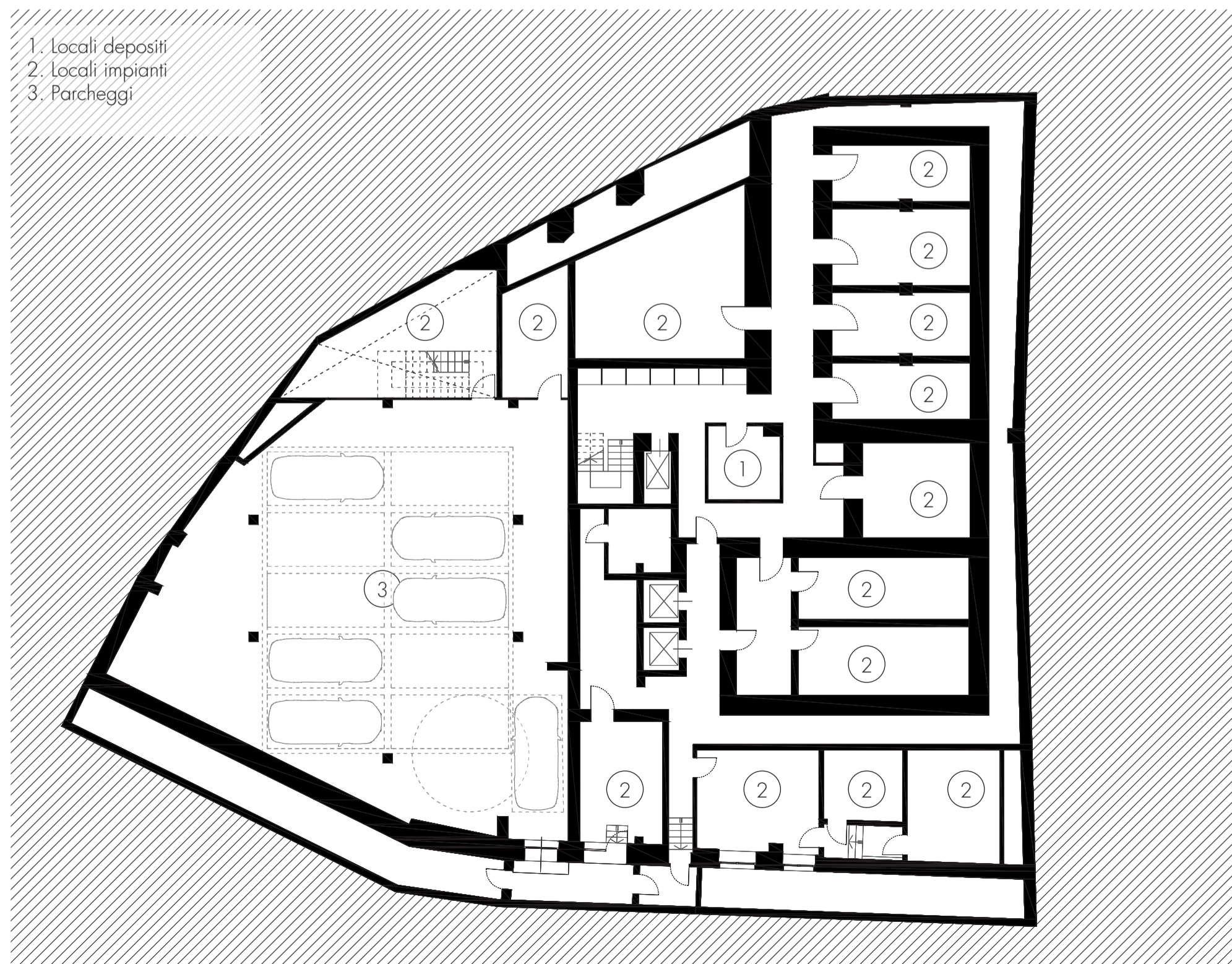
Giardino interno



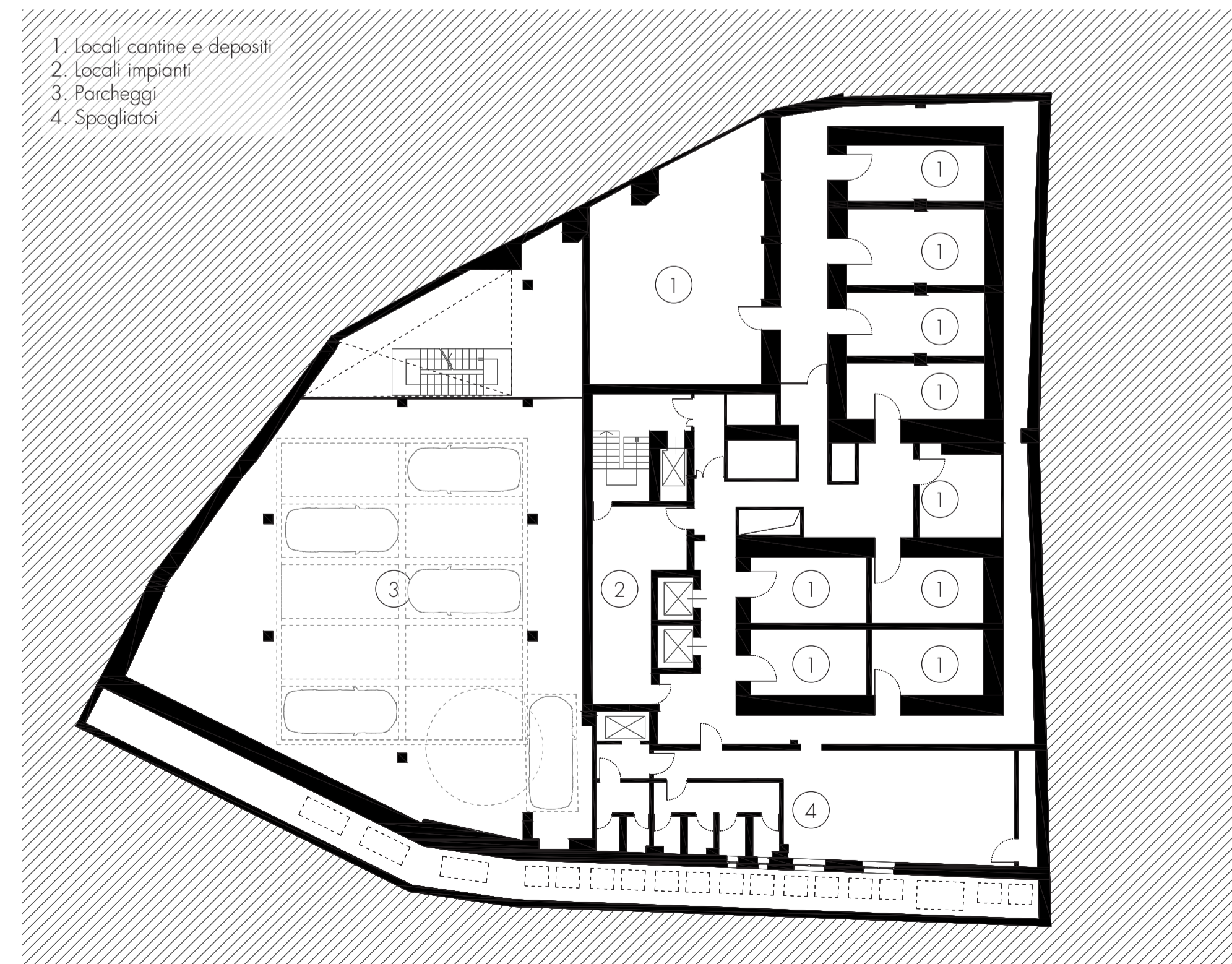
Ingresso dal Vicolo Santa Maria alla Porta



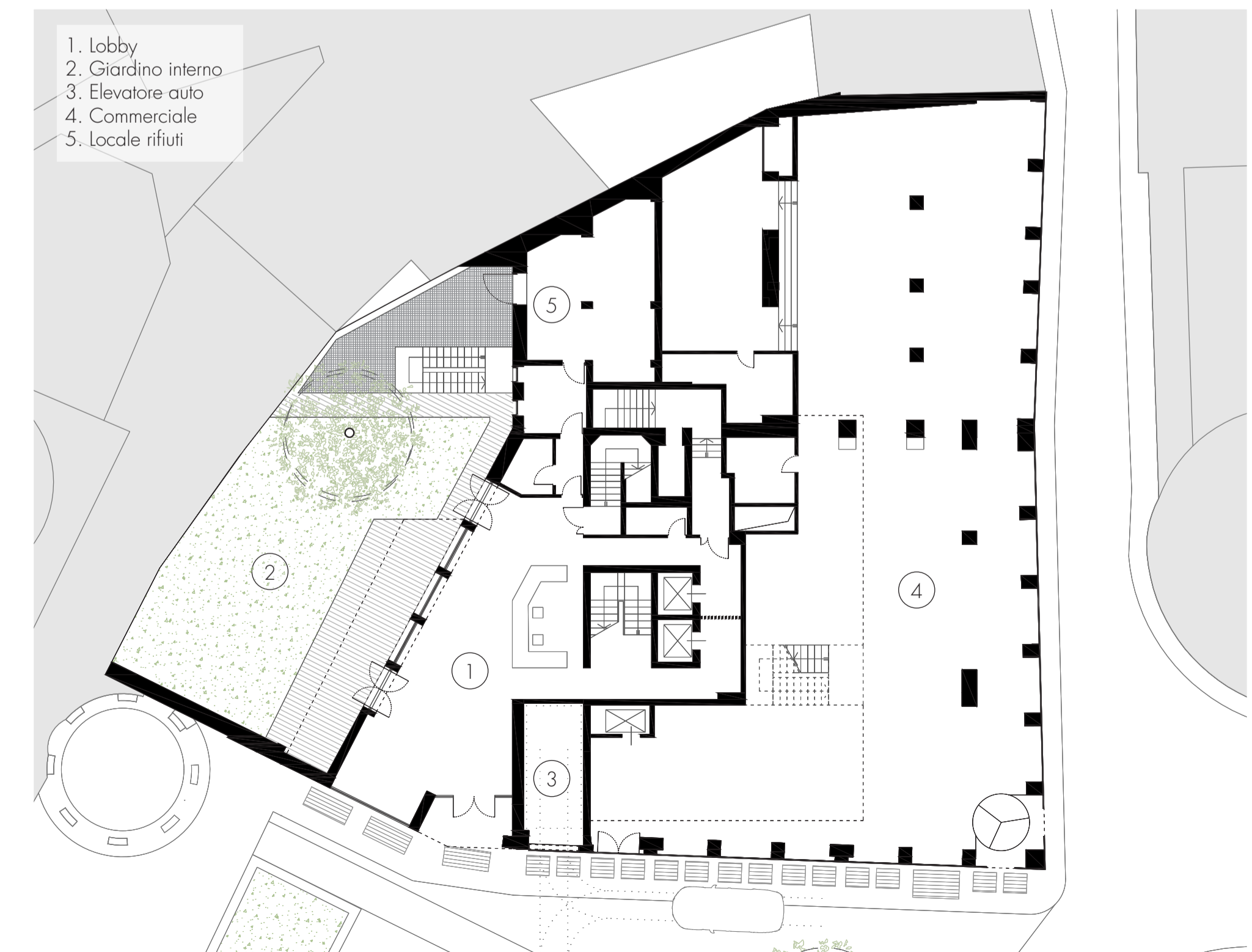
Appartamento



Piano interrato -2 1:200



Piano interrato -1 1:200



Piano terra 1:200

- 1. Locali depositi
- 2. Locali impianti
- 3. Parcheggi

- 1. Locali cantine e depositi
- 2. Locali impianti
- 3. Parcheggi
- 4. Spogliatoi

- 1. Lobby
- 2. Giardino interno
- 3. Elevatore auto
- 4. Commerciale
- 5. locale rifiuti